



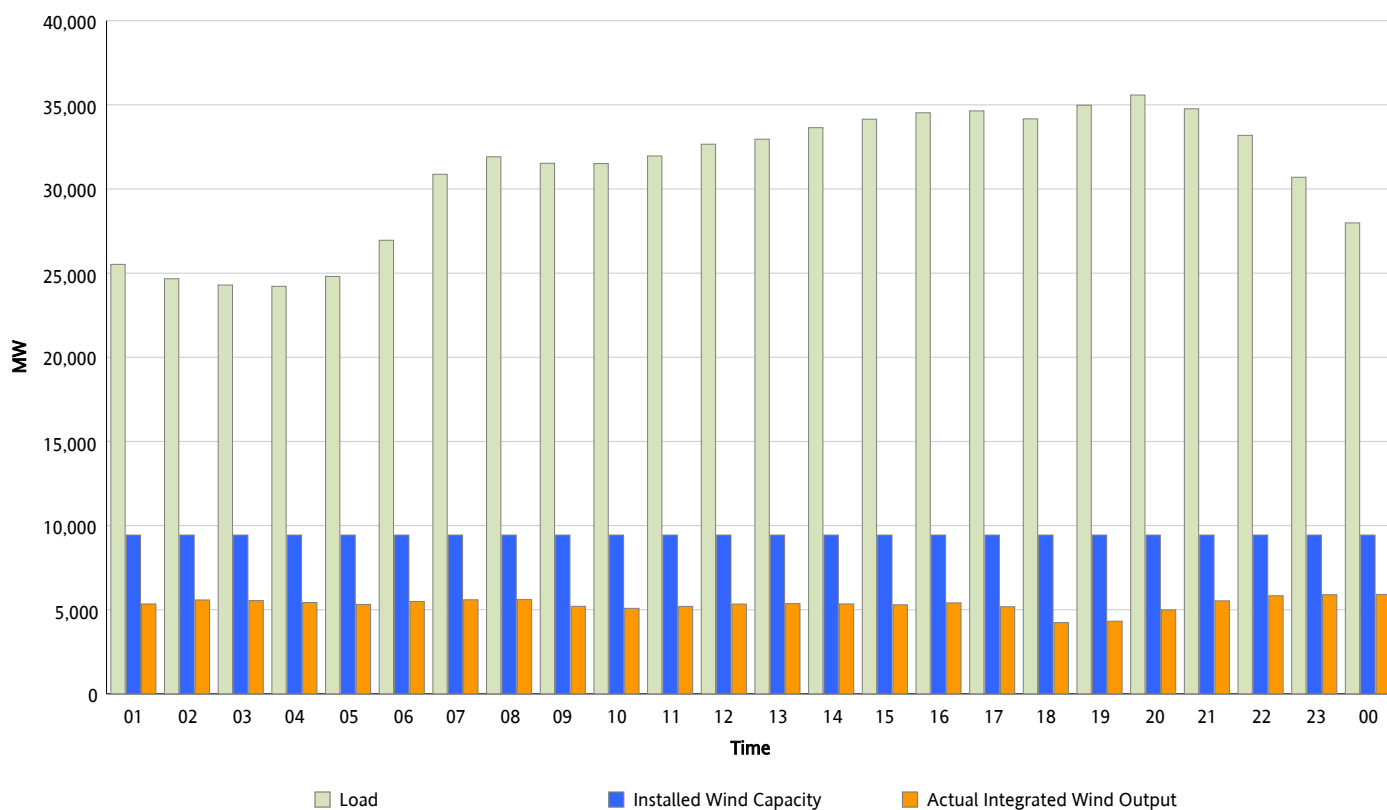
ERCOT Grid Operations

Wind Integration Report : 02/22/2012

Peak Load	35,579 MW
Load Peak Hour (HE)	20
Wind Over Peak	4,989 MW
Wind Record 10/07/11	7,400 MW
Max Wind Value*	6,067 MW
Wind Peak Time	22:48
Wind Integration %	20.31 %

Hourly Average Actual Load vs. Actual Wind Output

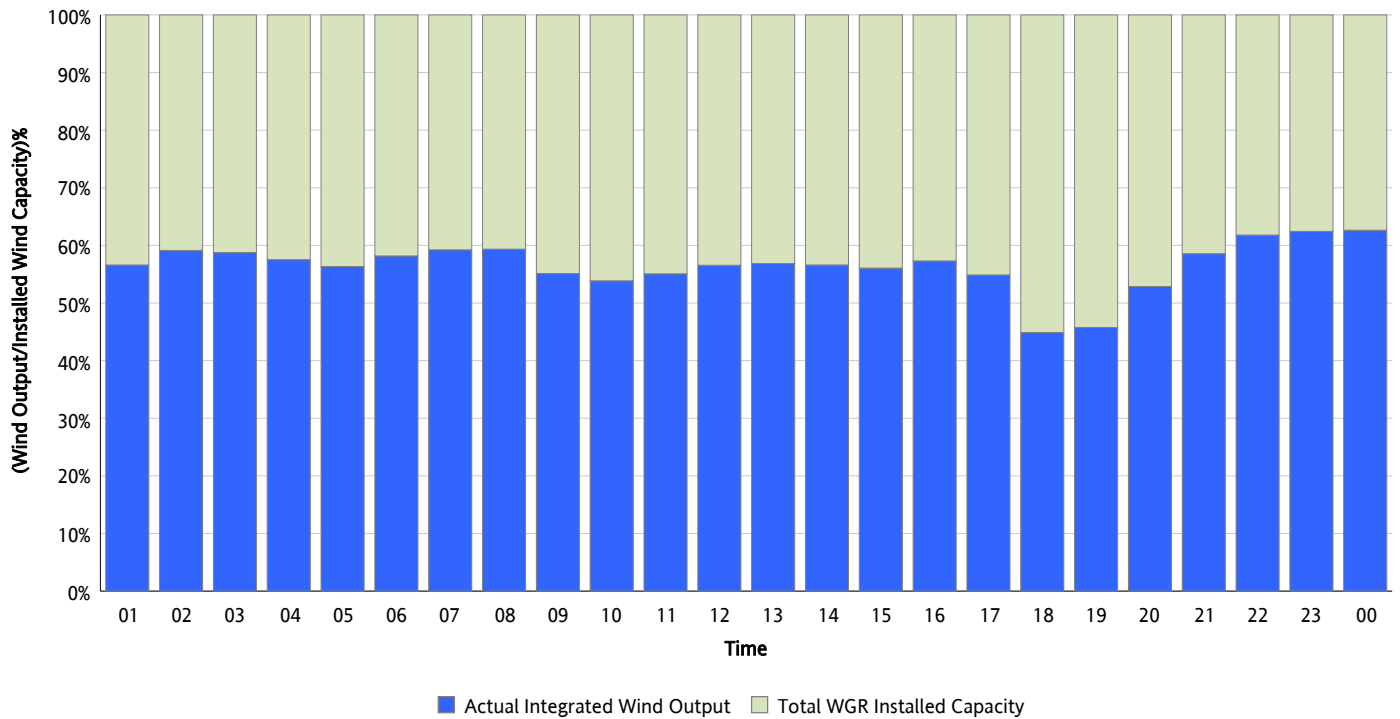
02/22/2012



* Wind Max represents the instantaneous value and the rest of the values are integrated over the hour

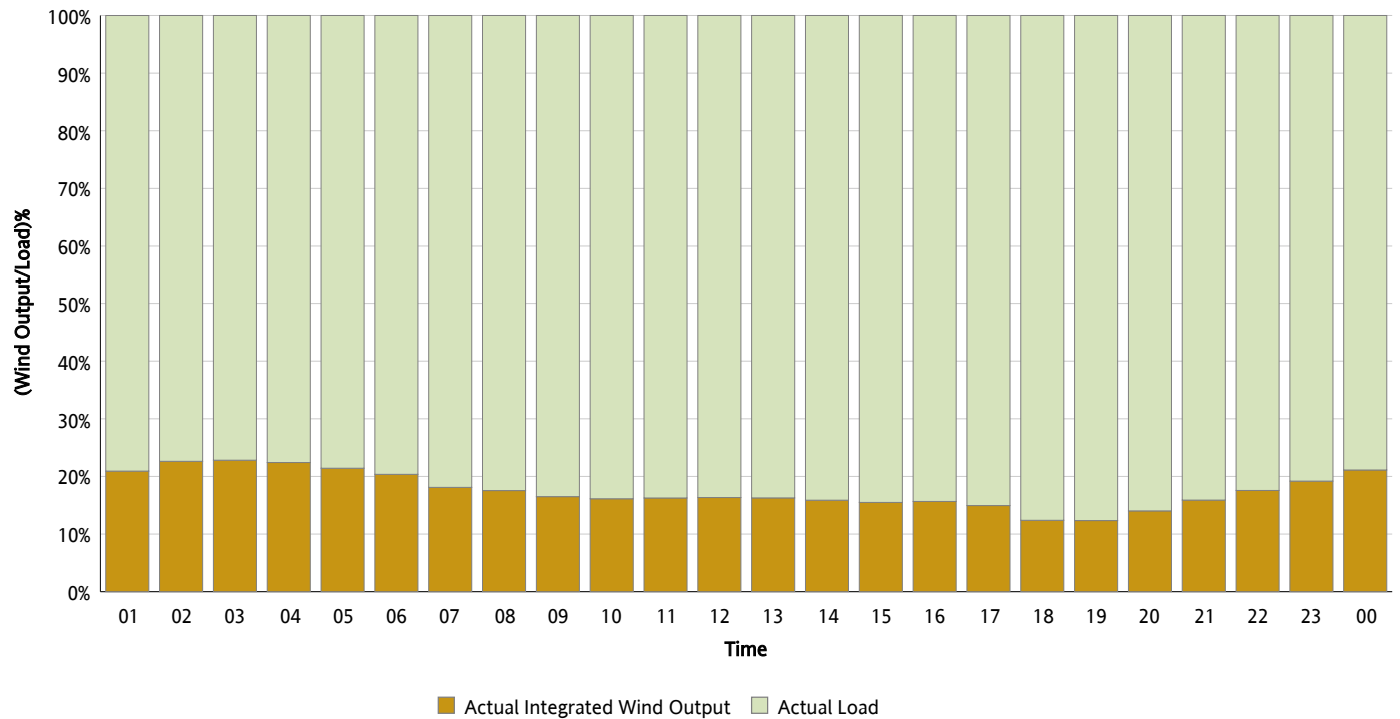
Actual Wind Output as a Percentage of the Total Installed Wind Capacity

02/22/2012



Actual Wind Output as a Percentage of the ERCOT Load

02/22/2012



ERCOT Load vs. Actual Wind Output

02/15/2012 - 02/22/2012

